



Financial Results Briefing Material for Q2 FY2025

Appendix

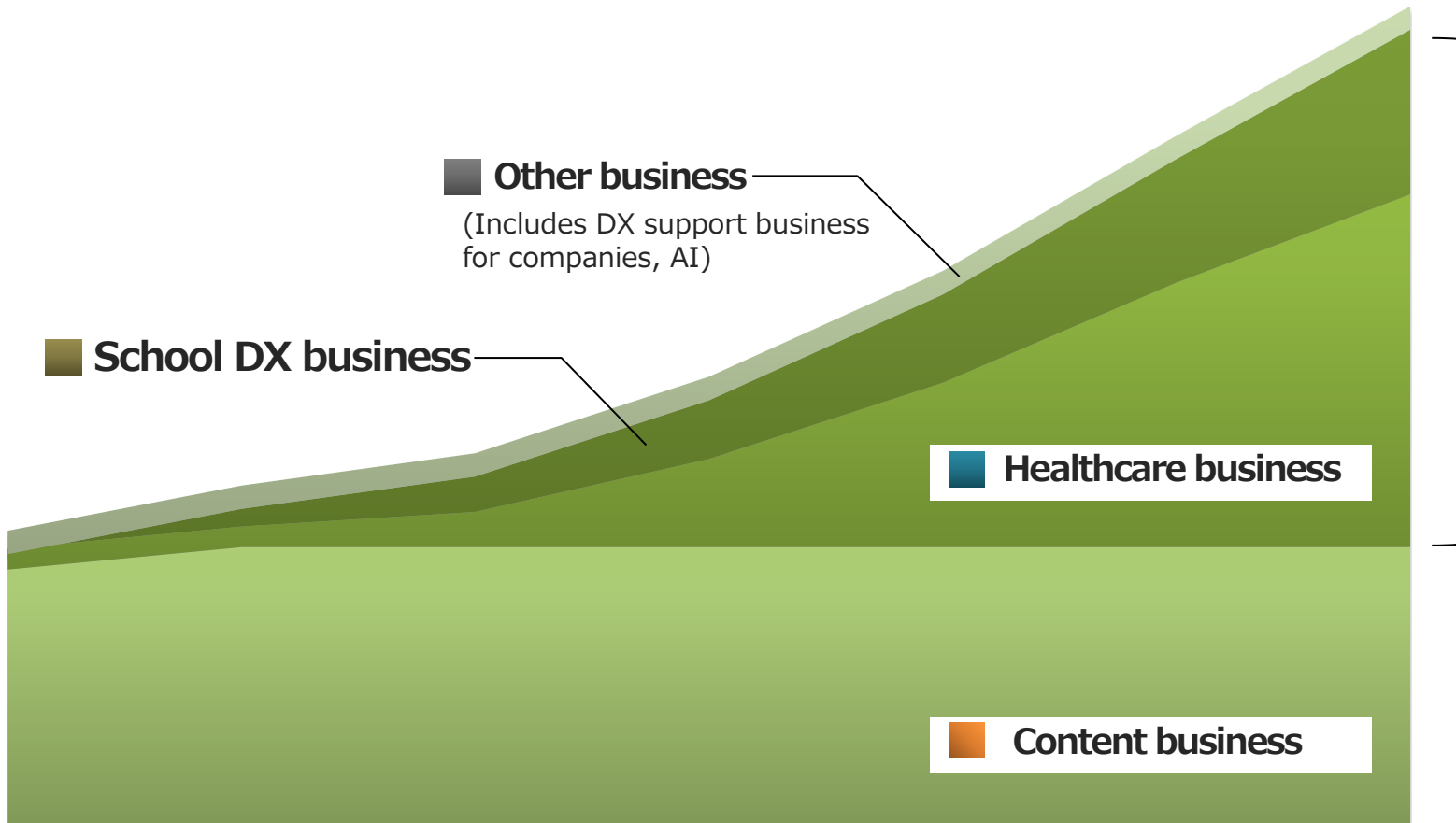
Earnings forecast for FY2025
Image of medium to long-term profit
Consolidated P/L
Consolidated SG&A
Business of segment
Consolidated B/S
The list of main healthcare services
Overview of healthcare services
Cloud-based medication history service
Maternal health record book app + Childcare DX services
School DX business

Earnings forecast for FY2025

(Unit : Mil yen)	FY2024 (Actual)			FY2025 (Forecast)			YoY	
	Full year	H1	H2	Full year	H1 (Actual)	H2	Amount (full year)	Ratio (full year)
Net sales	27,669	13,517	14,151	29,400	14,885	14,514	+1,730	+6.3%
Cost of sales	7,264	3,612	3,651	7,500	3,793	3,706	+235	+3.2%
Gross profit	20,405	9,905	10,499	21,900	11,091	10,808	+1,495	+7.3%
SG&A	18,011	8,852	9,157	18,900	9,451	9,448	+889	+4.9%
Operating income	2,394	1,052	1,341	3,000	1,639	1,360	+605	+25.3%
(Ratio)	9.0%	7.8%	9.5%	10.2%	11.0%	9.4%		
Ordinary income	2,721	1,518	1,309	3,100	1,721	1,378	+272	+9.6%
(Ratio)	10.0%	11.2%	9.3%	10.5%	11.6%	9.5%		
Profit attributable to owners of parent	2,256	1,558	805	2,190	1,757	432	(173)	(7.4)%
(Ratio)	8.0%	11.5%	5.7%	7.4%	11.8%	3.0%		

*The midpoint of the forecast range is presented for the fiscal year ending September 2025 for convenience.

Image of medium to long-term profit



**In the midium to long-term,
Healthcare business and
School DX businesses
will drive the profit growth**

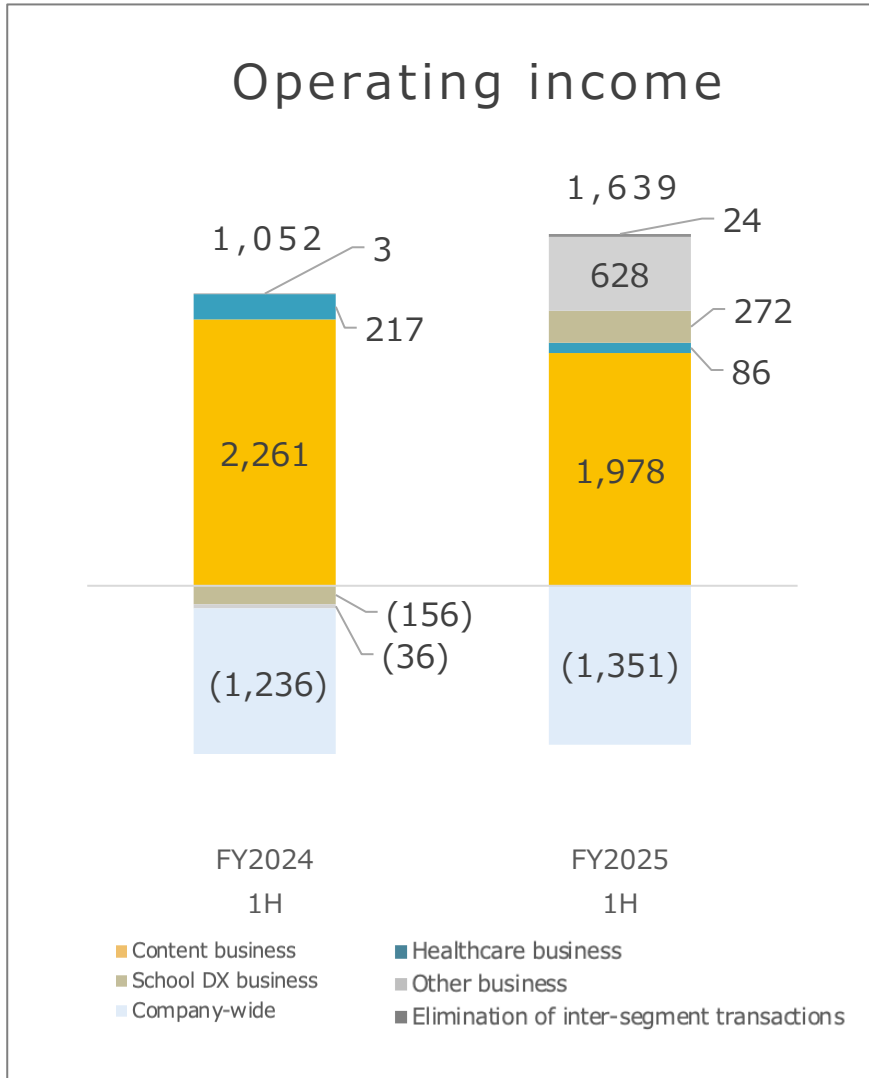
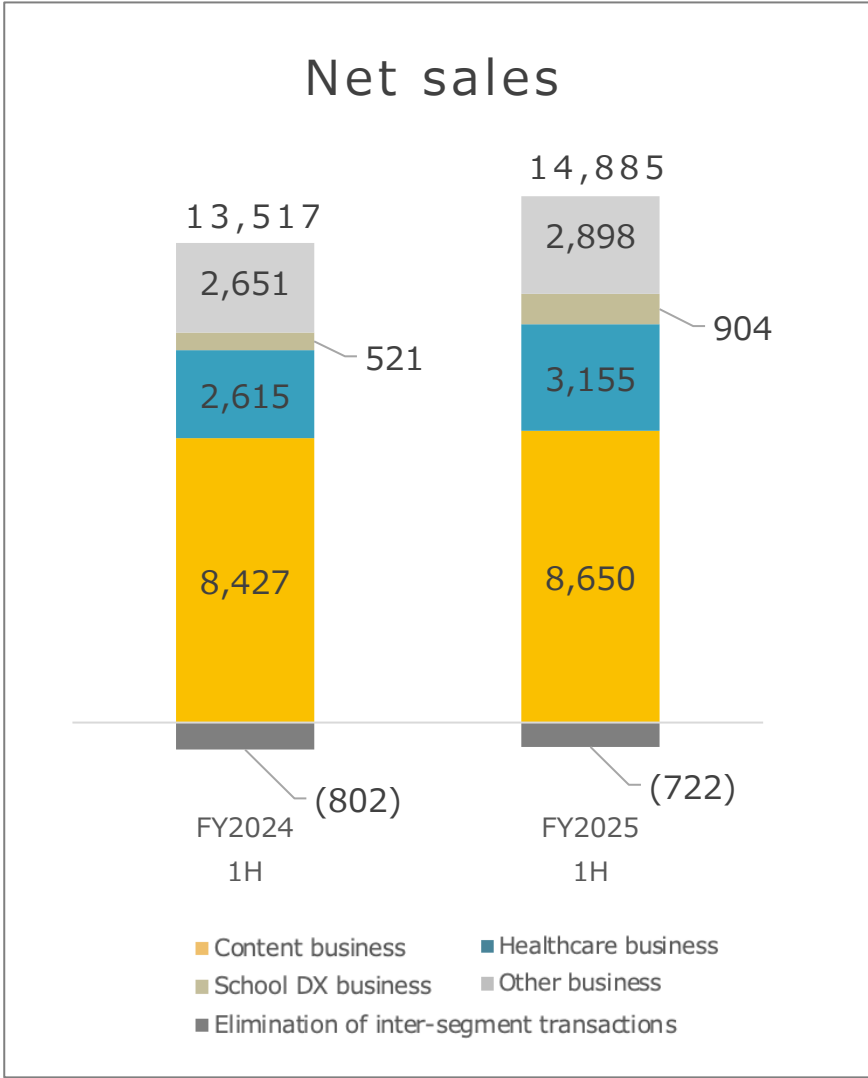
FY2025

Trends in consolidated P/L

	FY2023				FY2024				FY2025	
(Unit : Mil yen)	Q1	Q2	Q3	Q4	Q1	Q2	Q3	Q4	Q1	Q2
Net sales	7,091	6,540	6,507	6,660	6,625	6,892	7,018	7,132	7,271	7,613
Cost of sales	2,538	1,942	2,014	1,930	1,788	1,824	1,830	1,820	1,860	1,932
Gross profit	4,552	4,597	4,493	4,729	4,836	5,068	5,187	5,311	5,410	5,680
(Ratio)	64.2%	70.3%	69.0%	71.0%	73.0%	73.5%	73.9%	74.5%	74.4%	74.6%
SG&A	4,613	4,554	4,492	4,413	4,401	4,451	4,488	4,669	4,692	4,759
Operating income	(61)	42	0	316	435	616	699	641	718	921
(Ratio)	(0.9)%	0.7%	+0.0%	4.7%	6.6%	9.0%	10.0%	9.0%	9.9%	12.1%
Ordinary income	(88)	275	(35)	306	792	725	844	464	783	938
(Ratio)	(1.3)%	4.2%	(0.5)%	4.6%	12.0%	10.5%	12.0%	6.5%	10.8%	12.3%
Profit attributable to owners of parent	(590)	264	821	257	630	928	684	120	589	1,168
(Ratio)	(8.3)%	4.0%	12.6%	3.9%	9.5%	13.5%	9.8%	1.7%	8.1%	15.3%

Trends in consolidated SG&A

	FY2023				FY2024				FY2025	
(Unit : Mil yen)	Q1	Q2	Q3	Q4	Q1	Q2	Q3	Q4	Q1	Q2
SG&A	4,613	4,554	4,492	4,413	4,401	4,451	4,488	4,669	4,692	4,759
Advertising expense	479	537	553	566	626	674	711	788	890	986
Personnel expenses	1,989	1,958	1,956	1,810	1,818	1,774	1,816	1,867	1,814	1,795
Commission fee	746	745	731	731	709	706	719	735	737	753
Subcontract expenses	560	498	454	451	441	467	410	418	412	427
Depreciation	289	301	332	341	318	334	345	361	336	280
Other	549	513	464	511	486	494	485	497	501	516



Performance by segment (Quarterly trend)

Net sales

	FY2023				FY2024				FY2025	
	Q1	Q2	Q3	Q4	Q1	Q2	Q3	Q4	Q1	Q2
(Unit : Mil yen)										
Consolidated	7,091	6,540	6,507	6,660	6,625	6,892	7,018	7,132	7,271	7,614
Content business	5,118	4,384	4,317	4,289	4,210	4,216	4,202	4,304	4,292	4,357
Healthcare business	1,011	1,184	1,181	1,239	1,260	1,355	1,407	1,458	1,492	1,662
School DX business	155	153	272	270	260	260	364	347	412	492
Other business	1,190	1,227	1,183	1,221	1,228	1,423	1,418	1,283	1,441	1,456
Company-wide expenses	-	-	-	-	-	-	-	-	-	-
Elimination of inter-segment transactions	(384)	(408)	(447)	(360)	(334)	(363)	(374)	(262)	(367)	(355)

Performance by segment (Quarterly trend)

Operating income


	FY2023				FY2024				FY2025	
(Unit : Mil yen)	Q1	Q2	Q3	Q4	Q1	Q2	Q3	Q4	Q1	Q2
Consolidated	(61)	42	0	316	435	616	699	641	718	921
Content business	1,439	1,355	1,210	1,218	1,091	1,169	1,059	999	970	1,008
Healthcare business	(172)	(46)	(13)	9	112	104	61	72	13	72
School DX business	(246)	(214)	(107)	(99)	(81)	(75)	65	24	100	171
Other business	(393)	(413)	(413)	(178)	(88)	51	163	173	304	324
Company-wide expenses	(678)	(654)	(632)	(651)	(609)	(627)	(633)	(700)	(672)	(678)
Elimination of inter-segment transactions	(8)	17	(42)	17	9	(5)	(16)	71	1	22

Consolidated B/S

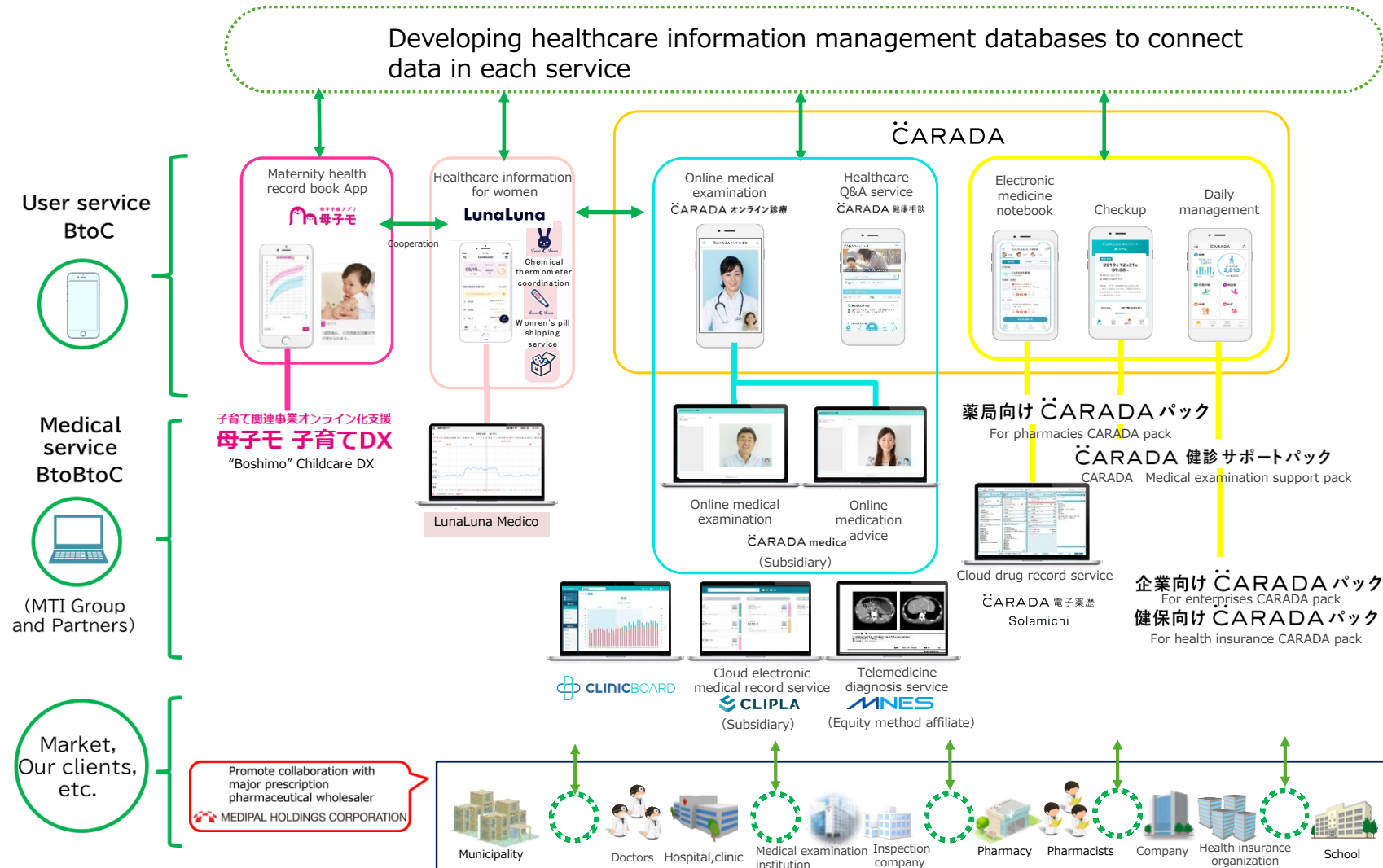
MTI Ltd.

	FY2024	FY2025-Q2	Change		FY2024	FY2025-Q2	Change
(Unit : Mil yen)							
Current assets	20,152	20,932	+780	Current liabilities	6,951	6,830	(121)
Cash and deposits	14,828	15,240	+412	Account payable-trade	1,100	1,133	+33
Notes and accounts receivable - trade, and contract assets	4,183	4,703	+519	Current portion of long-term borrowings	737	737	-
Allowance for doubtful accounts	(31)	(28)	+2	Account payable-other	1,331	1,564	+233
Other	1,171	1,016	(154)	Income taxes payable	94	506	+411
				Contract liabilities	2,667	2,026	(640)
Non-current assets	9,533	9,772	+24	Other	1,020	860	(159)
Property, plant and equipment	203	227	(1)	Non-current liabilities	3,590	3,314	(276)
Intangible assets	2,275	2,399	+123	Long-term borrowings	1,693	1,325	(368)
Software	1,929	2,050	+121	Retirement benefit liability	1,828	1,912	+83
Goodwill	27	33	+6	Other	67	76	+9
Customer-related assets	70	72	+2	Total liabilities	10,541	10,144	(397)
Investments and other assets	7,054	7,145	+90	Shareholders' equity	15,105	16,421	+1,316
Investment securities	4,466	4,626	+159	Share capital	5,310	5,451	+141
Leasehold and guarantee deposits	293	290	(3)	Capital surplus	6,376	6,004	(371)
Deferred tax assets	2,248	2,170	(77)	Retained earning	6,626	7,562	+936
				Treasury shares	(3,207)	(2,596)	+610
Total assets	29,686	30,704	+1,018	Accumulated other comprehensive income	340	349	+8
				Subscription rights to shares	22	18	(4)
				Non-controlling interests	3,675	3,771	+95
				Total net assets	19,144	20,560	+1,415
				Total liabilities and net assets	29,686	30,704	+1,018

Figures are the actual as of end of March 2025.

Name of service	Service of function	Business model
	Maternal and Child Health Handbook service app. Vaccine scheduling function, parenting curve and information provided by municipalities.	BtoBtoC. The app is provided at no additional charge for those of childbearing age including mothers. Collects monthly usage fees from contracted municipalities nationwide. The service has been introduced by 704 municipalities. Childcare DX service has been introduced by 234 municipalities.
LunaLuna	Healthcare info service for women. Forecasting menstrual day & ovulation day.	BtoC. Over 21 million DL cumulative.(Free APP) More than 500 thousand people have registered for "Pill mode". 300 yen fee or higher for fertility mode and other modes. Going well in Women's pill shipping service.
Luna luna medico	LunaLuna linkage function for gynecologists. Daily health information for female patients is shown on hospital computers. The service is for fertility treatment.	BtoBtoC. (The service is currently provided at no additional charge.)
LunaLuna online medical examination	Complete online service provided in a single system, from making reservations for gynecological examinations to delivery of drugs from pharmacies	BtoBtoC.
ĊARADA 健康相談 (CARADA Health consultation)	Q&A service for doctors and people engaged in medical services. Helps eliminate daily health concerns.	BtoC. ¥400/month
ĊARADA オンライン診療 (CARADA Online medical examination)	The system offers full features that are necessary for online medical examination, from reservations to delivery of drugs and prescriptions. (Online medical examination + Online medication guidance)	BtoBtoC. Contracts with clinics and pharmacies.
ĊARADA	Service for medical examination institutions. Results of health checkups, including previous records, are sent to relevant smartphones as a graphic. The service, which enhances users' convenience, contributes to increasing the rate of checkups at health examination institutions.	BtoBtoC. Collects monthly usage fees from health examination institutions.
ĊARADA 電子薬歴 Solamichi (CARADA Cloud-based medication history service)	Cloud-based medication history service for pharmacies The medication guidance navigation function is highly rated. Links with the CARADA medical history notebook app.	BtoB. Initial cost for introduction + monthly usage fee 3,027 orders have been received.

Healthcare business: Overview of Healthcare services



*Some images are under development and may differ from the actual ones.

*The services provided by the Group include some services that provide support for medical sites, but do not perform medical activities.

Healthcare business: Cloud-based medication history service

Strong introduction to mid-size dispensing pharmacies

Collaboration with a major prescription pharmaceutical wholesaler  MEDIPAL HOLDINGS CORPORATION

New functional services

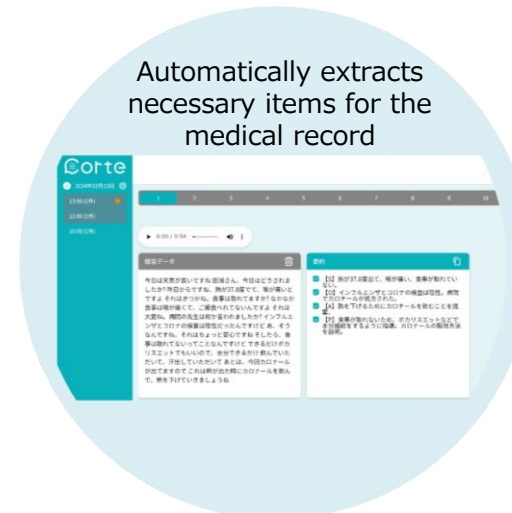
the automatic summary function has been well received

CARADA 電子薬歴 Solamichi

Medication guidance navigation



AI automatic summarization feature



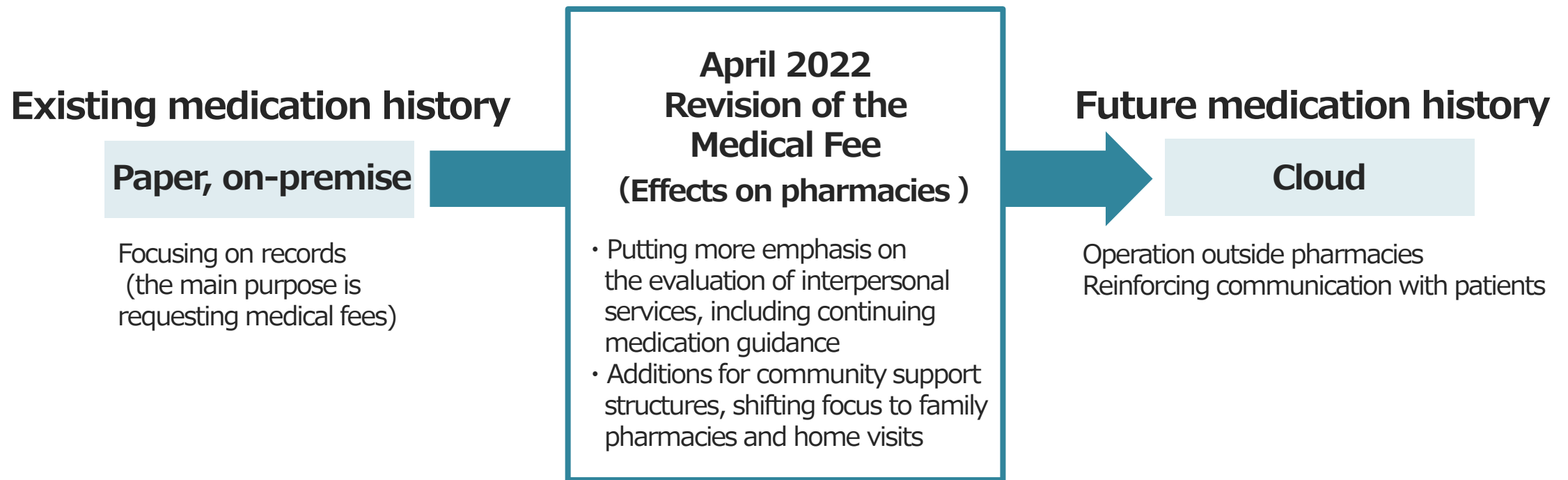
To further
improve
pharmacists'
work efficiency



- * "corte" was jointly developed by our subsidiary Solamichi System Inc. and by corte Inc.
- * "Corte" is a registered trademark of Corte Inc.

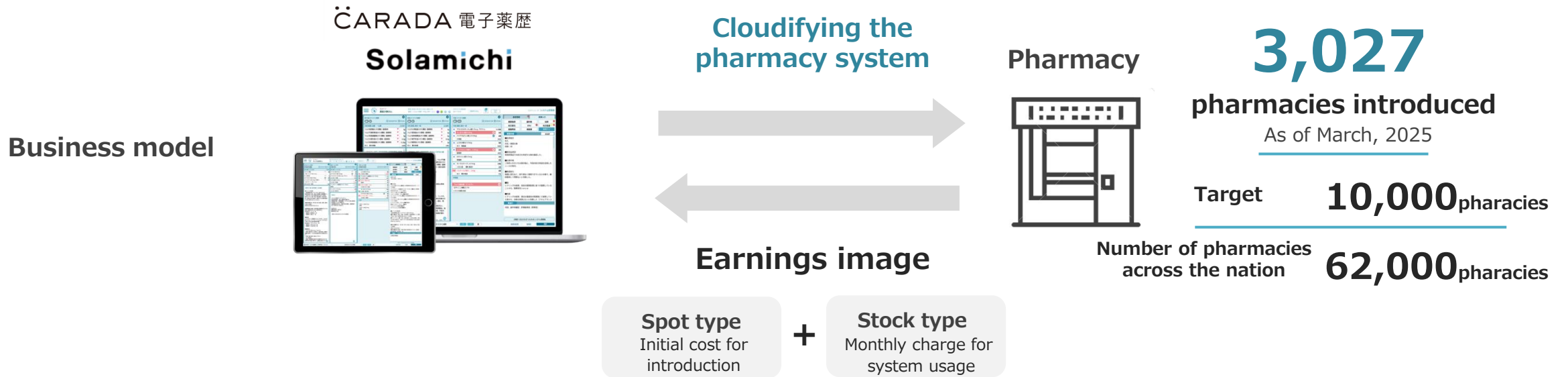
Healthcare business: Cloud-based medication history service

In response to the medical fee revision, the Company will promote a shift “from services handling materials to interpersonal services” at pharmacies and promote ICT at pharmacies as well



Demand for cloud-based medication history that has a wealth of medication advice and medication follow-up functions will increase

Market development with cloud technologies



What is 'medication history'?

Patient's drug prescription records

Pharmacists at pharmacies dispense drugs based on doctor's prescriptions. After the drugs are administered, they monitor the effects and possible adverse effects through direct interaction with patients to prepare a drug administration history for each patient. With each revision of the revision of the Medical Fee System, interest in electronic drug histories, especially those featuring "cloud drug record" and "medication administration guidance functions," has increased, shifting from traditional paper or on-premise drug records to cloud-based systems.

Healthcare business:
Maternal and child health handbook app + Childcare DX services



"Childcare support" is a social issue

Delay in digitalization for childcare support

Paper-based procedures
Extremely inefficient



Guardian Municipal Immunization facilities

Childcare-related
procedures
**Digitalization is
a pressing issue**

- ✓ Parents forced to visit the office with small children, long waiting times
- ✓ Parents asked to enter the same things every time in questionnaires
- ✓ Much paperwork is written by hand, and specifications vary between municipalities



Healthcare business:
Maternal and child health handbook app + Childcare DX services

Development of the platform business starting with the maternal and child health handbook app "Boshimo"

Phasse	1	2	3
Service functionalities	Maternal and child health handbook app	Online consultation	<div>Childcare DX services</div> <div><ul style="list-style-type: none">• Questionnaire and reservation form functionality• Childhood immunizations (Digital preliminary examination slip , etc.)• Infant health checkup• Visits to all households with infants</div>
Fee	¥50,000~ ¥100,000/month	+ Monthly : Tens of thousands of yen	+ Initial : Millions of yen ~ Monthly : Hundreds of thousands of yen ~
The number of municipalities introduced (Number of municipalities nationwide 1,741)	704	84	234 (Total)

*The fee structure is set by each municipality according to the number of births.

Promote introduction in municipalities not yet using the maternal and child health handbook app

Pregnancy·Birth

Pregnancy health records

pregnancy weight graph

Parenting

Vaccination management

Infant health

Height and weight

Growth records

Notice

facility search

Local childcare events

Questionnaire

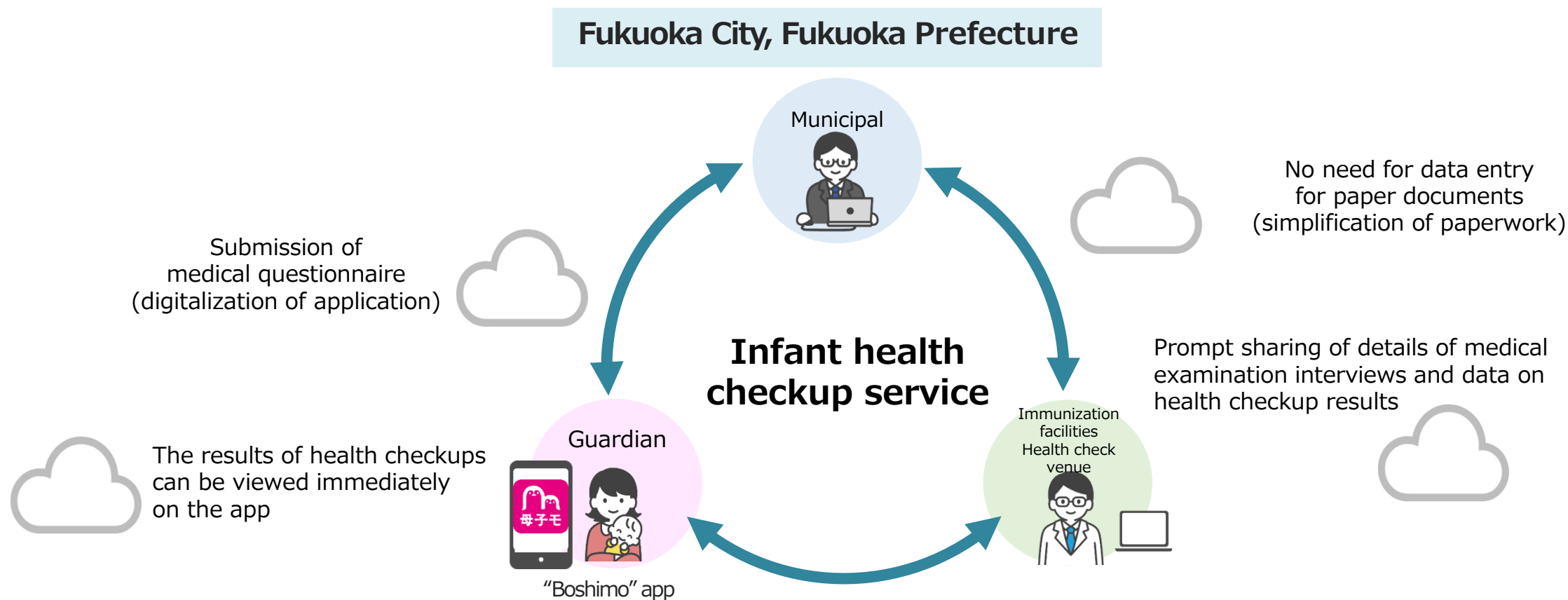
Schedule management



(Reference) Healthcare business :
Maternal and child health handbook app + Childcare DX services

Phase 3 : Childcare DX services

**Municipalities advance childcare DX with the introduction of infant health checkup services.
(Digitization of medical questionnaires and medical checkup results)**





(Reference) Healthcare business :
Maternal and child health handbook app + Childcare DX services

Phase 3 : Childcare DX services

Municipalities which were quick off the mark with childcare measures are pushing ahead with DX through the introduction of MTI's services.

Kitakyushu City, Fukuoka Prefecture

Electronic filing of pregnancy notifications(APP)

- Prior applications for issuance of a maternal and child health handbook can be submitted via the app.
- Pregnancies registered via the app account for more than 93% of the total birth rate.



Ichihara City, Chiba Prefecture

Digital pre-vaccination form for childhood immunizations

- Digital pre-vaccination forms are being used at medical institutions that have introduced the service.
- Time taken for verification between vaccinations has been shortened from 3 minutes to several seconds.



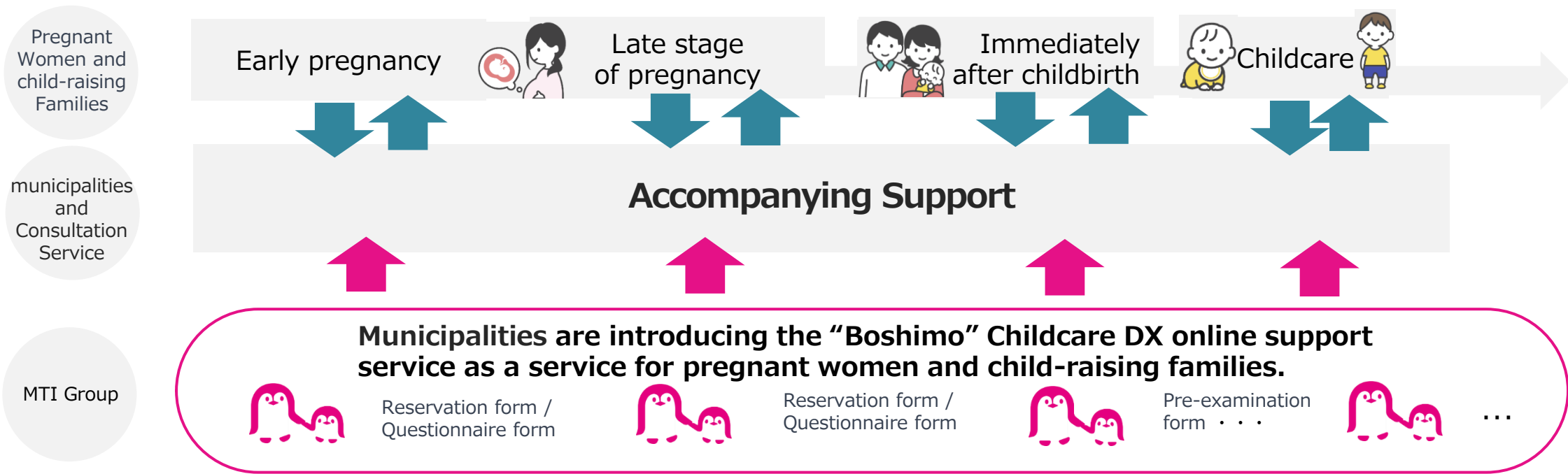
Healthcare business : Maternal and child health handbook app + Childcare DX services



Phase 3 : Childcare DX services

What is ‘Accompanying Support Program’?

Government pregnancy and childcare support service launched in January 2023. Supports pregnant women and child-raising families with children below the age of 3 to plan for childbirth and raising children. Includes a total of three face-to-face meetings (upon registration of pregnancy and directly before and after birth) and a gift voucher of 100,000 yen. Parents are also put in contact with a local counselling organizations to give them peace of mind and provide a supportive environment for childbirth and parenting.



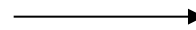
School DX business : Full cloud-based school affairs support system

Serious problems in schools

Excessive teacher overtime and increased resignations

Traditional school affairs

**Excessive workload
and inefficiency**



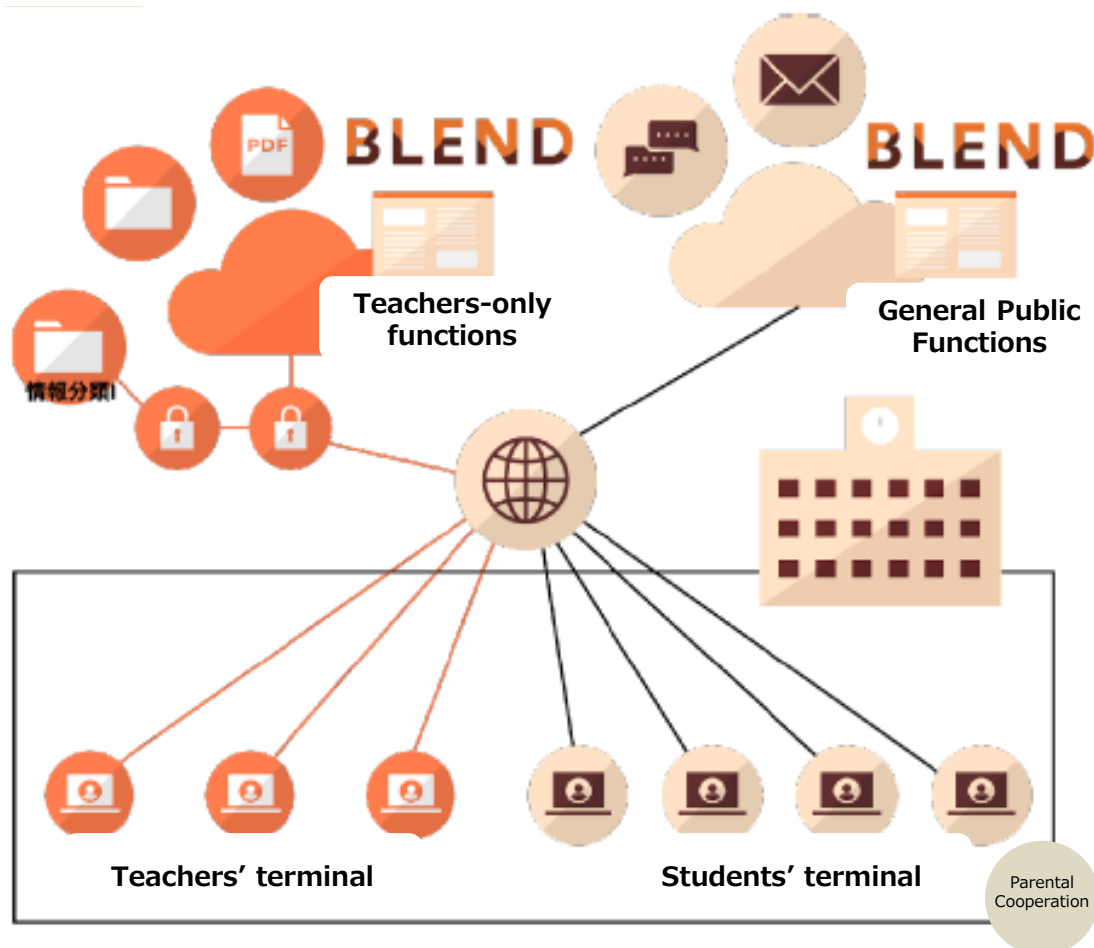
**Shifting all school
affairs to the cloud
is a pressing issue**

- ✓ Using multiple systems: management cost burden
- ✓ Varying specifications, handwritten and PC-based admin: work-time burden
- ✓ Data linkage is time consuming

School DX business : Full cloud-based school affairs support system

A world with **BLEND**

Eliminating all negatives



Functions

- Fully cloud-based centralized management of data
- Data linkage without returning to the staff room
- Data linkage with parents and guardians

Effects

- Reducing workload for school affairs
- Reducing system management costs

Values

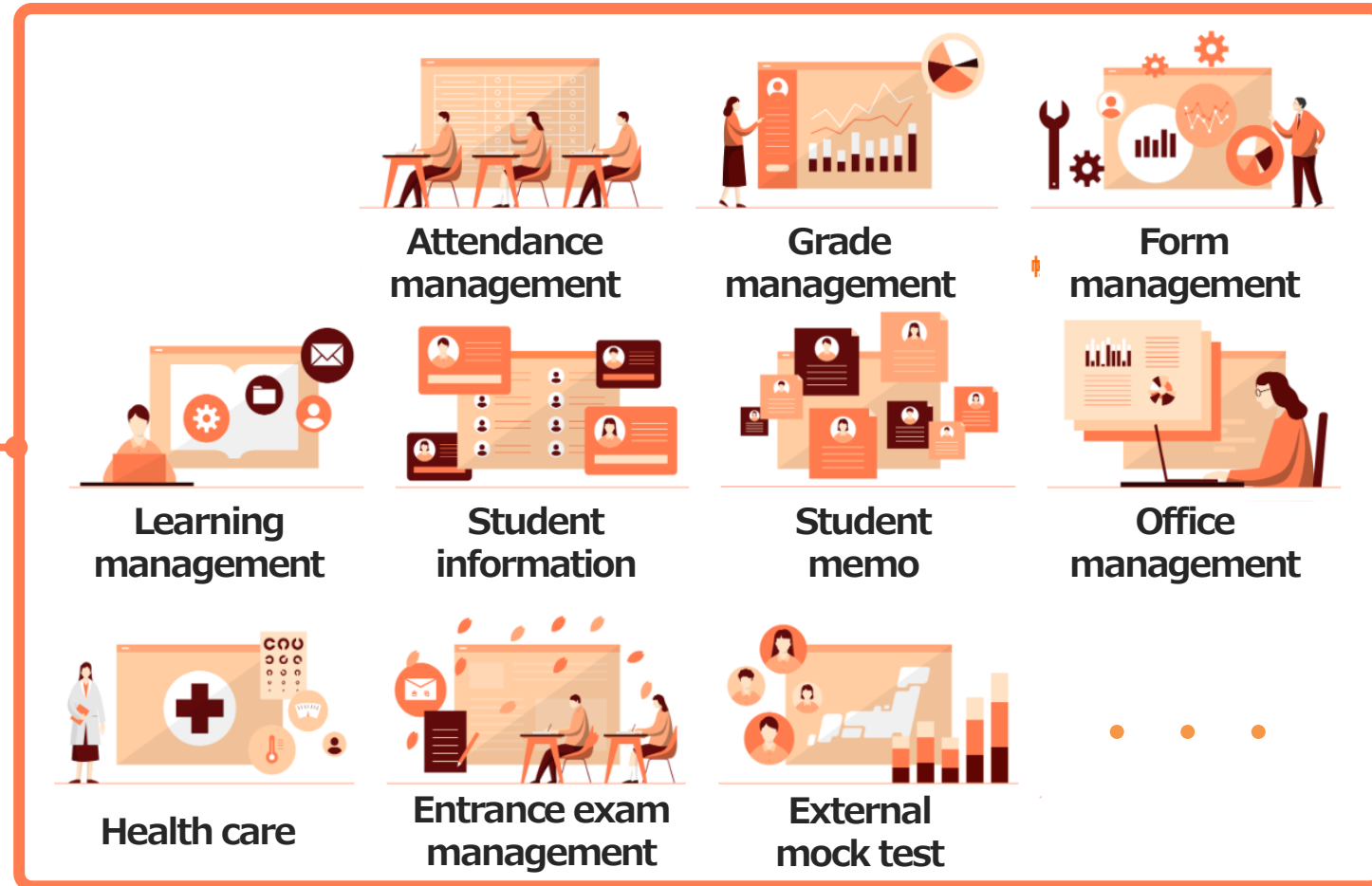
Create an environment that enables concentration on essential education through the provision of school DX services

School DX business : Full cloud-based school affairs support system

Full cloud-based transformation of all necessary elements for school affairs support system

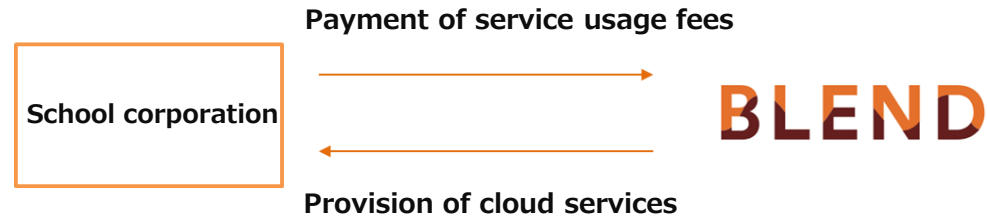
Cloud-based school affairs support system

BLEND



School DX business : Cloud-based school affairs support system

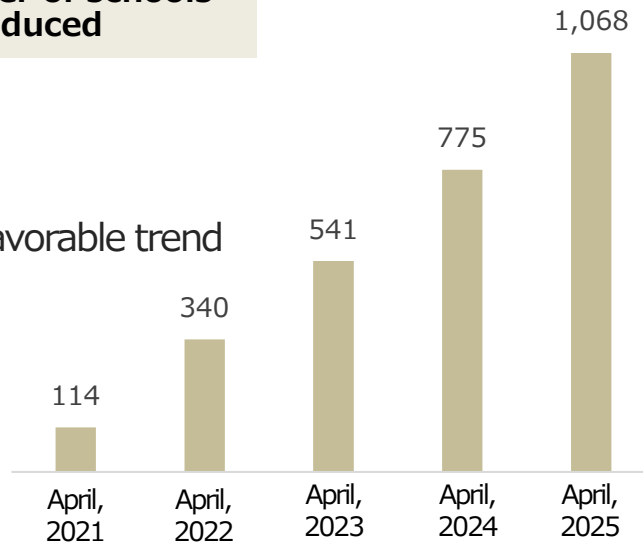
Business model



$$\text{Net sales} = \text{Number of students} \times \text{The usage fee per student is 300 yen (Monthly \& List price)} \times \text{Number of schools introduced}$$

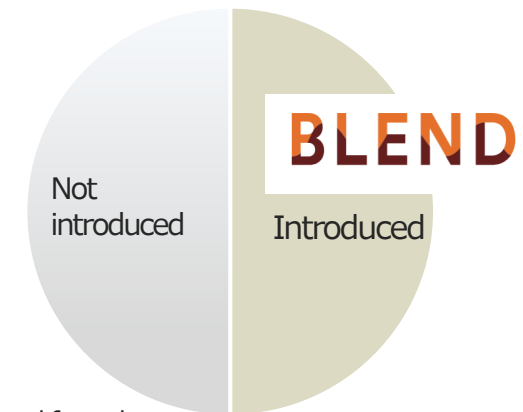
KPI: Number of schools introduced

Showing a favorable trend



Market share

Private middle and high school **50%**
(Cumulative for FY2025-H1)



Document: Created by our company, sourced from the [Ministry of Education, Culture, Sports, Science and Technology \(MEXT\)](https://www.mext.go.jp/) website.



〈Contact us〉

Investor Relations Office

e-mail: ir@mti.co.jp

<https://ir.mti.co.jp/eng/>